

[www.jcpindustries.com](http://www.jcpindustries.com)

# JCP INDUSTRIES

**J**ANAKI **C**ASTING AND **P**LASTIC INDUSTRIES  
PLASTIC INJECTION MOLD & MOLDING AND DIE-CASTING  
TECHNOLOGIES

## ABOUT US

**JANAKI CASTING AND PLASTIC (JCP)** Industries is one of the leading manufacturer of Plastic Components and Tooling industry were got Tool designing, Tool making and production in one unit at Coimbatore.

JCP Industries is a ISO 9001:2008 certified company established in the year of 2005 by our Chairman and Managing Director Mr.R.Karthi, who got 22 Years of experience in Tool making, Plastic and Die Casting Industries.

Our Equipments and skill level is capable enough to produce Plastic Injection Molds and Moulding and Die Casting Dies.

We have fixed contract arrangements with Machinery Maintenance experts to take care of preventive and periodical maintenance of Our Plant and Equipment.

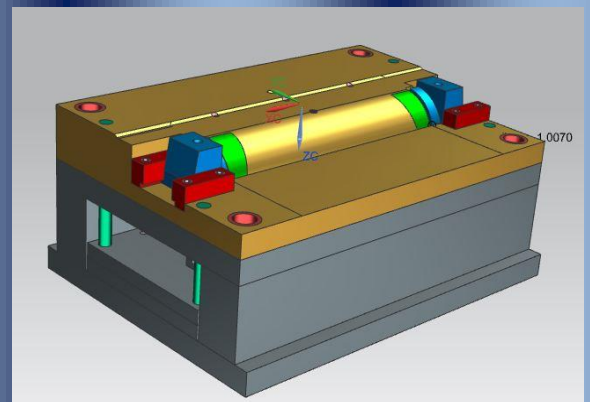
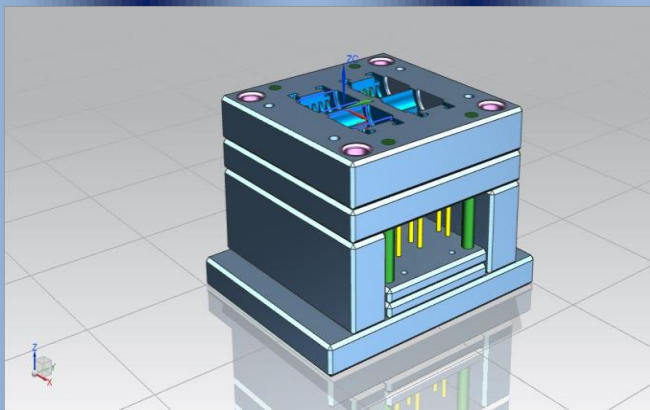
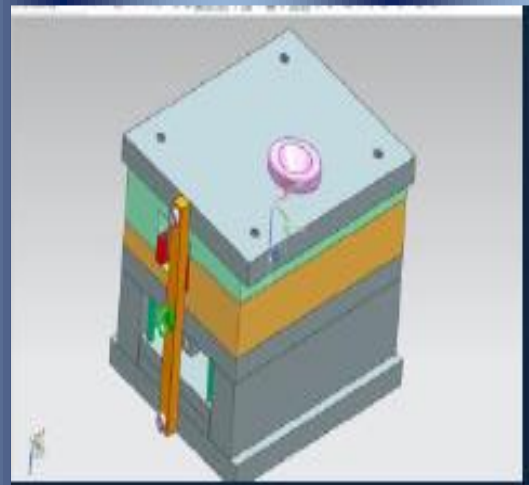
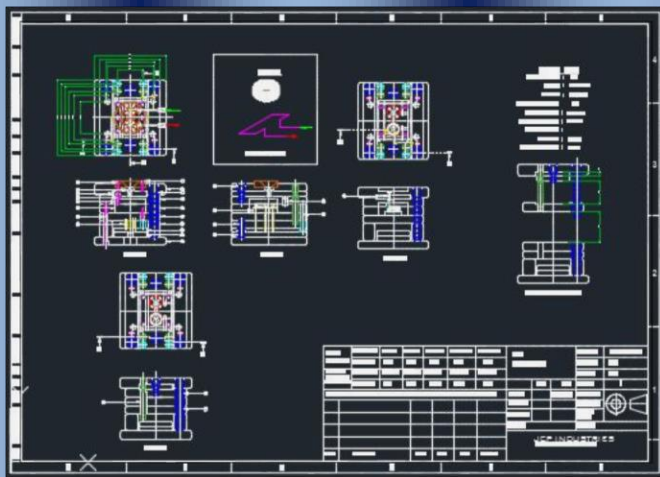
We are supported by vendor tool rooms for manufacturing and maintenance of dies.

Our quality checks are stringent, hence our supply of tools are free from defects such as material spec, parts spec as per requirement of our customers.

## TOOL MAKING

Modern Manufacturing facility and latest design software at out house helps to achieve intended quality and schedule.

Our company is completely involved in industrial art of manufacturing, different types of Plastic injection molds





## OUR TOOL ROOM MACHINERIES INCLUDE



**M1TR MILLING MACHINE**  
**MAKE: ARGO [TAIWA]**  
**CAPACITY: 3 KS with DRO**



**SURFACE GRINDING**  
**MAKE: OKAMOTO [JAPAN]**  
**CAPACITY: 250\*550mm**



**CENTRE LATHE MACHINE**  
**MAKE: ATUL [GUJARAT]**  
**CAPACITY: 5.5FEET**



**ELECTRICAL DISCHARGE MACHINE**  
**MAKE: OSCARMAX [TAIWA]**  
**CAPACITY: S430S ZNC**



**CYLINDRICAL  
GRINDING MACHINE  
MAKE: JONES-SHIPMAN  
[GERMANY]  
CAPACITY: 500mm  
length**



**DRILING MACHINE  
MAKE: ENKOH'S [JAPAN]  
CAPACITY: 1 inch**



**MILLING TURRET MACHINE  
MAKE: MAKINO [JAPAN]  
CAPACITY: 4 KS with DRO**



## OUR PRODUCTION MACHINERIES INCLUDE



**Plastic Injection Moulding Machine**  
**Machine Make: ARBURG [Germany]**  
**Controller: Hydronica 305ECO**  
**Machine Capacity: 50Ton**  
**Shot Weight: 120gms**  
**Distance between Die Bars: 270x270mm**

**Plastic Injection Moulding Machine**  
**Machine Make: NISSEI [Japan]**  
**Controller: NC -8000F**  
**Machine Capacity: 40Ton**  
**Shot Weight: 65gms**  
**Distance between Die Bars:**  
**300x300mm**



**Plastic Injection Moulding Machine**  
**Machine Make: CINCINNATIC MILACRON [USA]**  
**Controller: Mirley**  
**Machine Capacity: 350Ton**  
**Shot Weight: 964gm**  
**Distance between Die Bars: 625 x 625mm**



## PLANT DETAILS

### On Spot Source for Plastic Injection Molding Solution

Capacity	Ton
Specialty	Plastic and Injection Die mold castings
Year of Inception	2006

### On Spot Source for Tool Room Solution

Capacity	Unlimited
Specialty	Lathe, Milling machines, Hand Molding
Year of Inception	2004

## OUR CUSTOMERS INCLUDE



## CONTACT US:



*Mold and Molding & Die Casting Technologies...*

**45-D4A, 3rd Street, Sivanandhapuram,**

**Saravanampatti (PO),**

**Coimbatore-641 035.**



9442003062, 9445273062



info@jcpindustriees.com



www.jcpindustriees.com

